



## Tech Overview : How to Establish a Console Connection

Console connection is helpful upon the following situations: when the UI is inaccessible via browser, when the IT administrator forgets the IP address, when the IT administrator needs to restart the device or restore the factory settings, or when the support engineer needs to connect to the device for troubleshooting, etc. Following steps show you how to establish a console connection.

### Step 1.

Run HyperTerminal by selecting **Start > Programs > Accessories > Communications > HyperTerminal**. The **Connection Description** window appears.

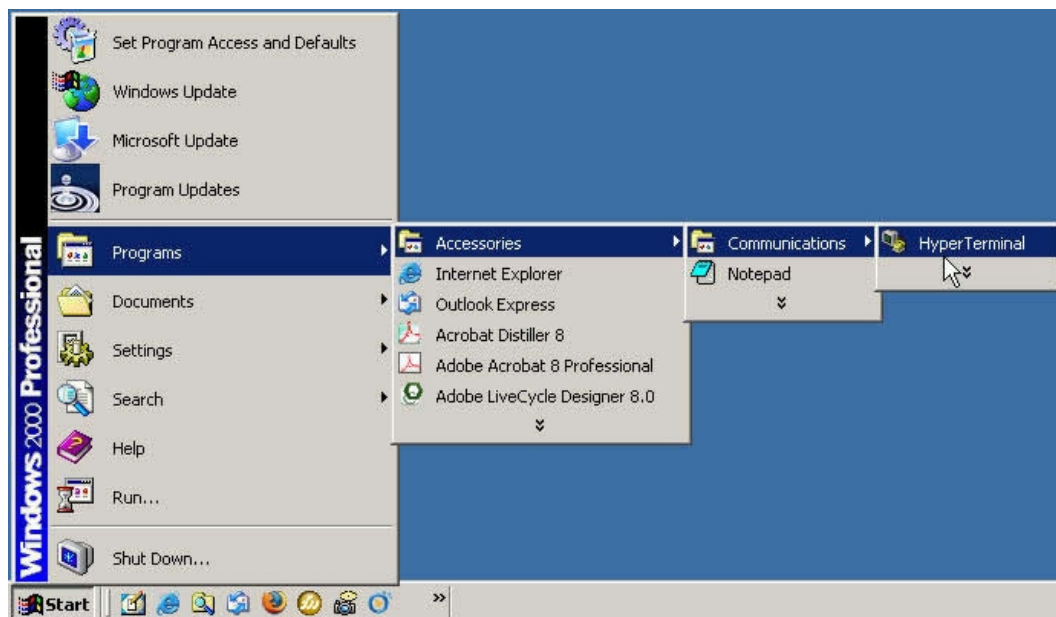


Figure 1 Launching HyperTerminal

### Step 2.

Enter a name for your session in the **Name** field.



Figure 2 Entering a Name for Your Connection



Step 3.

In the **Connect To** dialog box, choose the COM port to which the device is connected.  
 (Note: You may use USB adapter if your PC has no console port.)



Figure 3 Choosing COM1 from the Drop-Down List



Figure 4 USB Adapter



Figure 5 RS232 Cable and USB to RS232 Cable

In the **COM1 Properties** dialog box, set the **Flow control** to none and then set the **Bits per second** (in the blue rectangle) according to your model.

For MS1500G, MS2800, MS3700, MH1000, MH1500, MH2400G, IR950, IR1000G, IR1800, IR2500, ML1000G, ML2500, IDR-950, IDR-1000, IDR-1500, IDR-2000, IDR-3000, IDR-5000, MHG-1000, MHG-1500, MHG-2000, MHG-3000, MHG-5000, UTM-950, UTM-1000, UTM-1500, UTM-2000, UTM-3000, UTM-5000, MLS-950, MLS-1000, MLS-1500, MLS2000, MAF-1000, MAF-1500, MAF-2000, MAF-3000 and MAF-5000, set to **9600**.

For MS700 and MH700, set to **115200**.

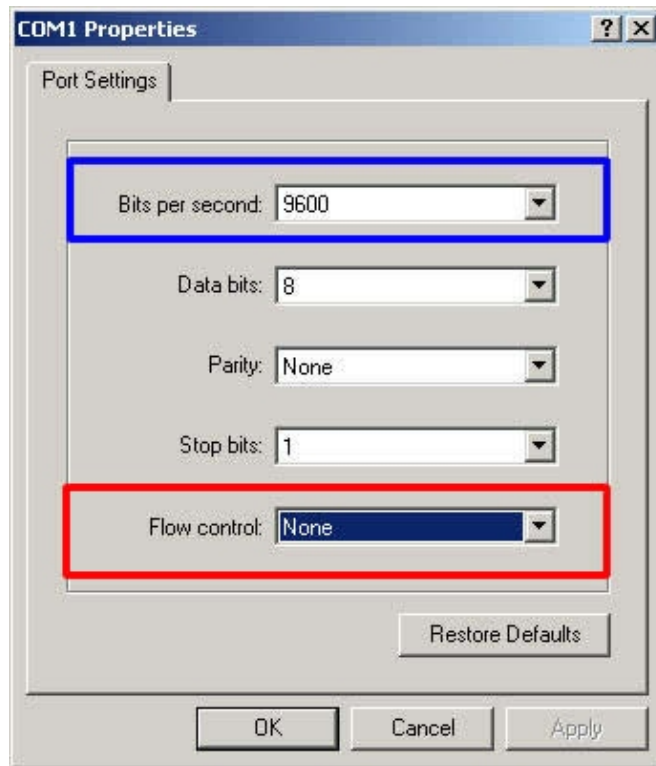


Figure 6 Setting the Bits per Second According to Your Model

Using console connection, the support engineers and agency may do the troubleshooting remotely, reducing the time and cost for delivering the device. In addition, it is suggested to place the cable on the device and connect it to the port. (See Figure 7) Then, you don't have to spend time to find the cable in case you need it.



Figure 7 Connecting the Cable to the Port and Placing It on the Device

Vista users (or the version later than Vista) can refer to the Nusoft Newsletter No. 33 for the description of using HyperTerminal.  
 ([http://download.nusoft.com.tw/us\\_download/Newsletter/Newsletter\\_033.pdf](http://download.nusoft.com.tw/us_download/Newsletter/Newsletter_033.pdf))